

America

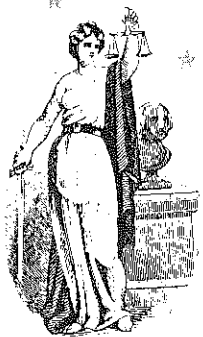
A FUGUE

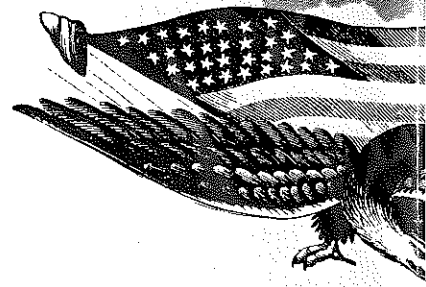
(a. 5. voci.)
(From 2nd Organ Sonata.)

EUGENE THAYER, Op. 2.

Maestoso.

Full Organ.





Musical notation system 1, consisting of a grand staff with treble and bass clefs. The music is in a key with one sharp (F#) and a 2/4 time signature. It features a melody in the treble clef and accompaniment in the bass clef.

Musical notation system 2, continuing the piece. The bass clef part includes dynamic markings such as 'A' and 'V' (piano) and 'O' (crescendo).

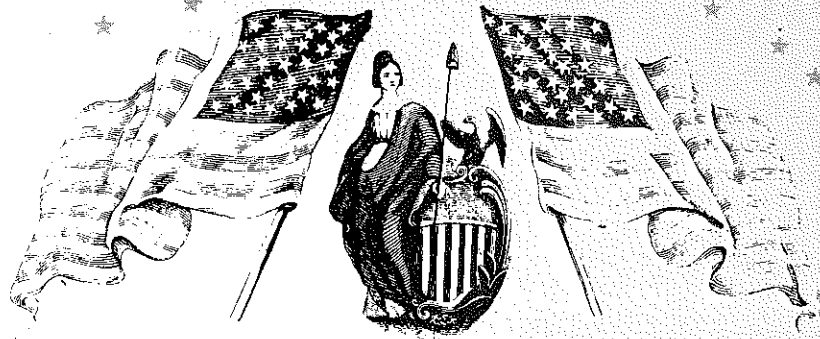
Musical notation system 3, continuing the piece. The bass clef part includes dynamic markings such as 'A' and 'V'.

Musical notation system 4, concluding the piece. The bass clef part includes dynamic markings such as 'A' and 'V'.



Decorative border on the left side of the page, featuring a repeating pattern of small stars and floral motifs.





Doppio.

